

# JCB

THE JOURNAL OF CELL BIOLOGY

VOL. 201, NO. 7, JUNE 24, 2013

Plant Virus Trafficking  
The Golgi's  
Recycling Program  
Microtubules  
Keep Drp1 in Reserve



## The Physical Limits of Cell Migration

3  
2  
2

[www.jcb.org](http://www.jcb.org)



## NEWS

### In This Issue

964

- A potato virus makes its move
- A mature view of the Golgi
- Sequestration puts Drp1 on furlough  
Ben Short

### In Focus

965

- Testing the limits of cell migration  
Ben Short

### People & Ideas

966

- John Briggs: A closer look at HIV and coated vesicles  
Caitlin Sedwick

## REVIEWS

### Reviews

969

- Imaging cell biology in live animals: Ready for prime time  
Roberto Weigert, Natalie Porat-Shliom, and Panomwat Amornphimoltham

## RESEARCH ARTICLES

### Articles

981

- Replication and trafficking of a plant virus are coupled at the entrances of plasmodesmata

Jens Tilsner, Olga Linnik, Marion Louveaux, Ian M. Roberts, Sean N. Chapman, and Karl J. Oparka

997

- The tumor suppressor CDKN3 controls mitosis

Grzegorz Nalepa, Jill Barnholtz-Sloan, Rikki Enzor, Dilip Dey, Ying He, Jeff R. Gehlhausen, Amalia S. Lehmann, Su-Jung Park, Yanzhu Yang, Xianlin Yang, Shi Chen, Xiaowei Guan, Yanwen Chen, Jamie Renbarger, Feng-Chun Yang, Luis F. Parada, and Wade Clapp

1013

- The spindle checkpoint, APC/C<sup>Cdc20</sup>, and APC/C<sup>Cdh1</sup> play distinct roles in connecting mitosis to S phase

Linda Clijsters, Janneke Ogink, and Rob Wolthuis

1027

- The dynamics of engineered resident proteins in the mammalian Golgi complex relies on cisternal maturation

Riccardo Rizzo, Seetharaman Parashuraman, Peppino Mirabelli, Claudia Puri, John Lucocq, and Alberto Luvini

1037

- Cyclin-dependent kinases regulate splice-specific targeting of dynamin-related protein 1 to microtubules

Stefan Strack, Theodore J. Wilson, and J. Thomas Cribbs

1053

- Complete integrin headpiece opening in eight steps

Jieqing Zhu, Jianghai Zhu, and Timothy A. Springer

1069

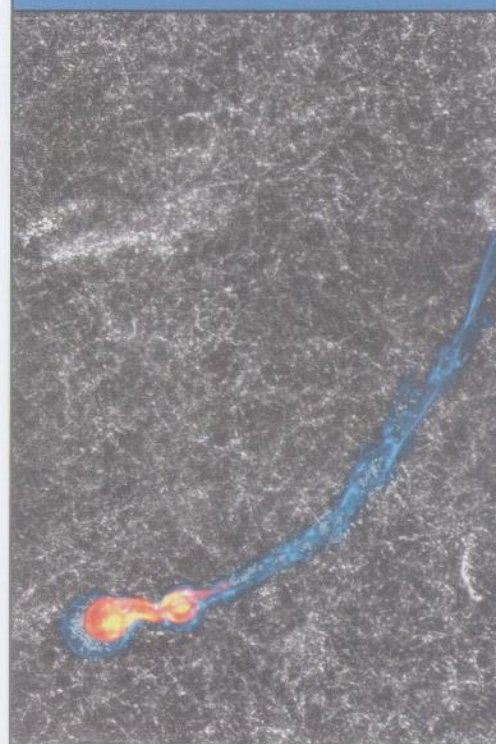
- Physical limits of cell migration: Control by ECM space and nuclear deformation and tuning by proteolysis and traction force

Katarina Wolf, Mariska te Lindert, Marina Krause, Stephanie Alexander, Joost te Riet, Amanda L. Willis, Robert M. Hoffman, Carl G. Figdor, Stephen J. Weiss, and Peter Friedl

# JCB

THE JOURNAL OF CELL BIOLOGY

VOL. 201, NO. 7, JUNE 24, 2013



### On the cover

Wolf et al. explore the physical limits of cell migration. A cell labeled for F-actin (cyan) tries to move its nucleus (red/yellow) through a high-density lattice of rat tail collagen (grey) in the absence of matrix metalloproteinase activity.

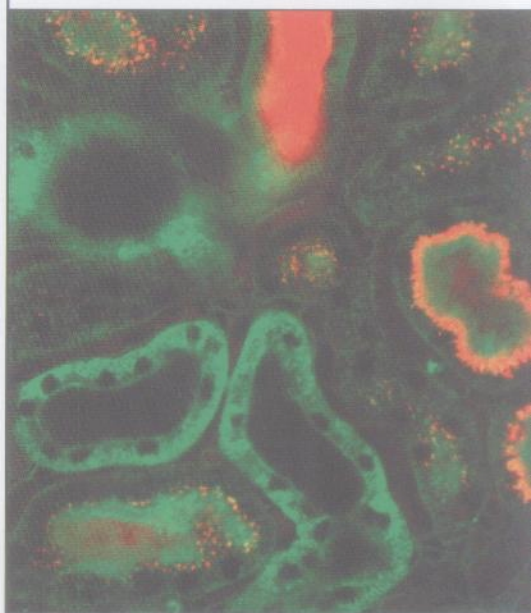
Image © 2013 Wolf et al.

See page 1069.

## Corrections

- 1085** Desmosomal cadherins utilize distinct kinesins for assembly into desmosomes  
Oxana E. Nekrasova, Evangeline V. Amargo, William O. Smith, Jing Chen, Geri E. Kreitzer, and Kathleen J. Green

- 1087** FBH1 promotes DNA double-strand breakage and apoptosis in response to DNA replication stress  
Yeon-Tae Jeong, Mario Rossi, Lukas Cermak, Anita Saraf, Laurence Florens, Michael P. Washburn, Patrick Sung, Carl L. Schildkraut, and Michele Pagano



Weigert et al. review methods to image subcellular events in living animals, including the internalization of systemically injected fluorescent markers into small endocytic vesicles (red) in the proximal tubuli of mouse kidneys. Cell membranes are labeled green. Image © 2013 Weigert et al. See page 969.