

Notices

of the American Mathematical Society

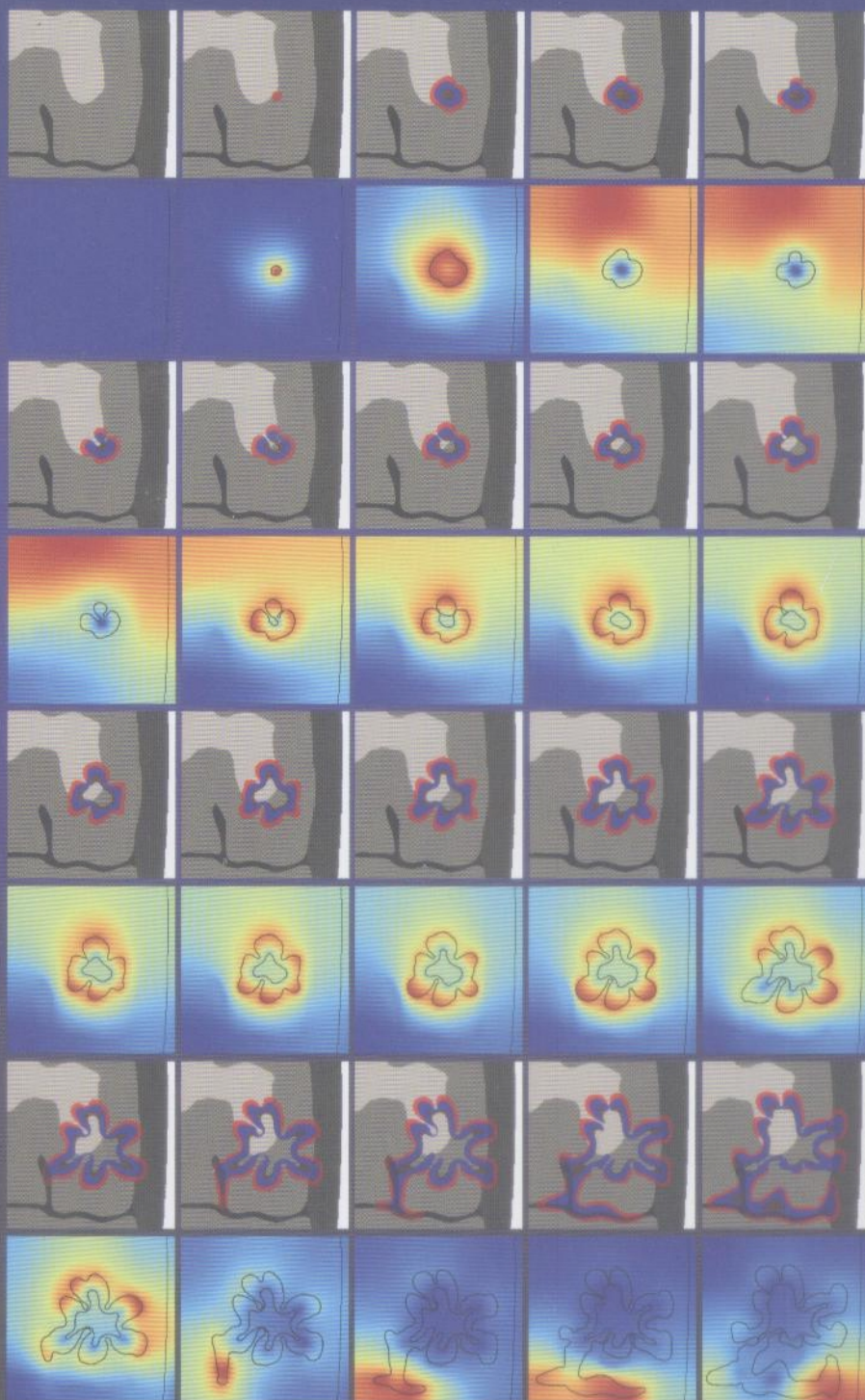
March 2013

Volume 60, Number 3

Remembering Walter Rudin
(1921–2010)
page 295

Cancer Modeling: A Personal
Perspective
page 304

A Revolutionary Material
page 310



5

1

0

25th Anniversary
AMERICAN MATHEMATICAL SOCIETY



Advancing Mathematics Since 1888

Simulating the development of a brain tumor (see page 325)

Notices

of the American Mathematical Society

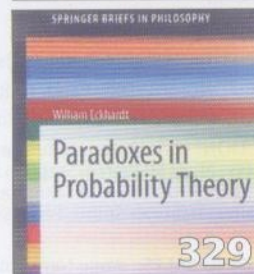
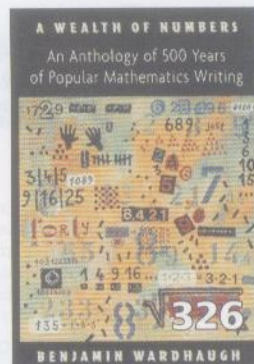
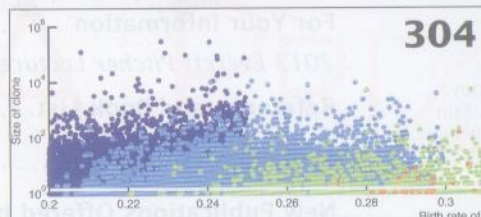
March 2013

Communications

- 316** Preliminary Report on the 2011–2102 New Doctoral Recipients
Richard Cleary, James W. Maxwell, and Colleen Rose
- 332** What Is New in L^AT_EX? V. L^AT_EX on an iPad. Foundation
G. Grätzer
- 335** John G. Hocking
Som Naimpally
- 336** Presidential Views: Interview with David Vogan
Allyn Jackson
- 340** *Doceamus*: How Content Matters
Alain Schremmer
- 347** *AMS Publications News*: Open Access
Donald E. McClure

Commentary

- 326** *A Wealth of Numbers—A Book Review*
Reviewed by Andy R. Magid
- 329** *Paradoxes in Probability Theory—A Book Review*
Reviewed by Olle Häggström



Beware the Ides of March. This month we feature an article about the mathematical modeling of cancer, an article about the mathematical theory of quasicrystals, and a memorial article for Walter Rudin. The piece by George Grätzer describes how to do L^AT_EX on your iPad. And there is an interview with incoming AMS President David Vogan.

—Steven G. Krantz, Editor

Features

- 295** Remembering Walter Rudin (1921–2010)
Alexander Nagel and Edgar Lee Stout, Coordinating Editors
- 304** Cancer Modeling: A Personal Perspective
Rick Durrett
- 310** A Revolutionary Material
Charles Radin



Notices

of the American Mathematical Society

EDITOR: Steven G. Krantz

ASSOCIATE EDITORS:

Krishnaswami Alladi, David Bailey, Eric Bedford, Jonathan Borwein, Susanne C. Brenner, Danny Calegari, Bill Casselman (*Graphics Editor*), Jennifer Chayes, Gerald Folland, Susan Friedlander, Robion Kirby, Rafe Mazzeo, Harold Parks, Mark Saul, Carla D. Savage, Steven Strogatz, James Walker

SENIOR WRITER and DEPUTY EDITOR:

Allyn Jackson

MANAGING EDITOR: Sandra Frost

CONTRIBUTING WRITER: Elaine Kehoe

CONTRIBUTING EDITOR: Randi D. Ruden

EDITORIAL ASSISTANT: David M. Collins

PRODUCTION: Kyle Antonevich, Anna Hattoy, Teresa Levy, Mary Medeiros, Stephen Moye, Erin Murphy, Lori Nero, Arlene O'Sean, Karen Ouellette, Donna Salter, Deborah Smith, Peter Sykes, Patricia Zinni

ADVERTISING SALES: Anne Newcomb

SUBSCRIPTION INFORMATION: Subscription prices for Volume 60 (2013) are US\$547 list; US\$437.60 institutional member; US\$328.20 individual member; US\$492.30 corporate member. (The subscription price for members is included in the annual dues.) A late charge of 10% of the subscription price will be imposed upon orders received from nonmembers after January 1 of the subscription year. Add for postage: Surface delivery outside the United States and India—US\$27; in India—US\$40; expedited delivery to destinations in North America—US\$35; elsewhere—US\$120. Subscriptions and orders for AMS publications should be addressed to the American Mathematical Society, P.O. Box 845904, Boston, MA 02284-5904 USA. All orders must be prepaid.

ADVERTISING: *Notices* publishes situations wanted and classified advertising, and display advertising for publishers and academic or scientific organizations. Advertising material or questions may be sent to classifiedads@ams.org (classified ads) or notices-ads@ams.org (display ads).

SUBMISSIONS: Articles and letters may be sent to the editor by email at notices@math.wustl.edu, by fax at 314-935-6839, or by postal mail at Department of Mathematics, Washington University in St. Louis, Campus Box 1146, One Brookings Drive, St. Louis, MO 63130. Email is preferred. Correspondence with the managing editor may be sent to notices@ams.org. For more information, see the section "Reference and Book List".

NOTICES ON THE AMS WEBSITE: Supported by the AMS membership, most of this publication is freely available electronically through the AMS website, the Society's resource for delivering electronic products and services. Use the URL <http://www.ams.org/notices/> to access the *Notices* on the website.

[*Notices of the American Mathematical Society* (ISSN 0002-9920) is published monthly except bimonthly in June/July by the American Mathematical Society at 201 Charles Street, Providence, RI 02904-2294 USA, GST No. 12189 2046 RT****. Periodicals postage paid at Providence, RI, and additional mailing offices. POSTMASTER: Send address change notices to *Notices of the American Mathematical Society*, P.O. Box 6248, Providence, RI 02940-6248 USA.] Publication here of the Society's street address and the other information in brackets above is a technical requirement of the U.S. Postal Service. Tel: 401-455-4000, email: notices@ams.org.

© Copyright 2013 by the American Mathematical Society.
All rights reserved.

Printed in the United States of America. The paper used in this journal is acid-free and falls within the guidelines established to ensure permanence and durability.

Departments

About the Cover.....	325
Mathematics People	343
<i>Reed Awarded 2013 CRM-Fields-PIMS Prize, Bhargava Awarded Infosys Prize, Leverhulme Prizes Awarded, Matui Awarded Operator Algebra Prize, Prizes of the Mathematical Society of Japan, Isidori Receives 2012 IEEE Control Systems Award, Hendy Awarded Shorland Medal, AAAS Fellows 2012, 2012 Siemens Competition.</i>	
Mathematics Opportunities	346
<i>Call for Nominations for Prizes of the Academy of Sciences for the Developing World, Call for Nominations for Graham Wright Award.</i>	
For Your Information	346
<i>2013 Everett Pitcher Lectures, Correction.</i>	
Reference and Book List.....	349
Mathematics Calendar	354
New Publications Offered by the AMS.....	365
Classified Advertisements.....	371
Meetings and Conferences of the AMS.....	372
Meetings and Conferences Table of Contents.....	383

From the AMS Secretary

Call for Nominations for the 2014 Leroy P. Steele Prizes... 353



Opinions expressed in signed *Notices* articles are those of the authors and do not necessarily reflect opinions of the editors or policies of the American Mathematical Society.